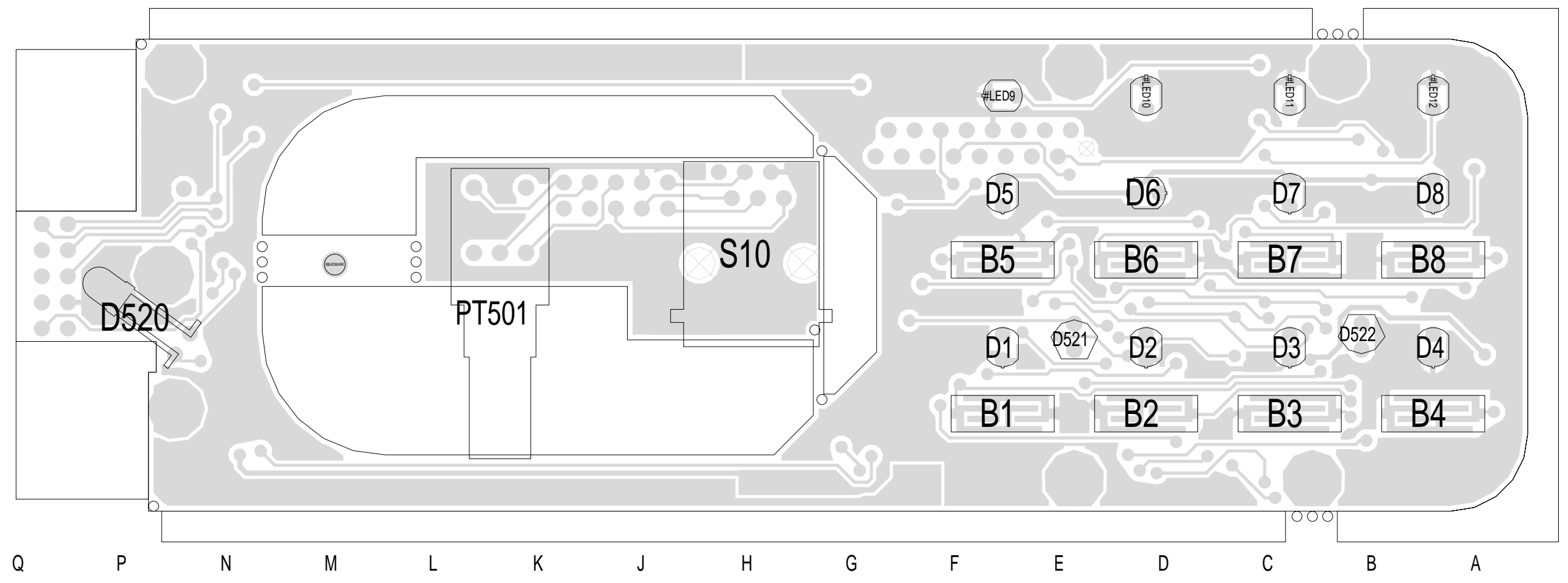


3A	ECO 21-1379	FIXED COLLIDING IC	BRD			17-02-12
2A	C/N:97/08-0467	FLIP POT-PCB	DJW			29/09/97
1C		LED UPDATE FOR SERIES 2	RPS			19/12/96
1B		UPDATED TO RECTIFY IC508 POSITION	YH			19/2/96
1A		ADDED(3) 1N0 CAPS BY S10 FOR EMC	YH			18/11/95
REV/ISS	AMENDMENTS		DRAWN	CHKD	D.O.	APVD DATE

© TAIT ELECTRONICS
 T2000 DISPLAY PCB
 2010/2030

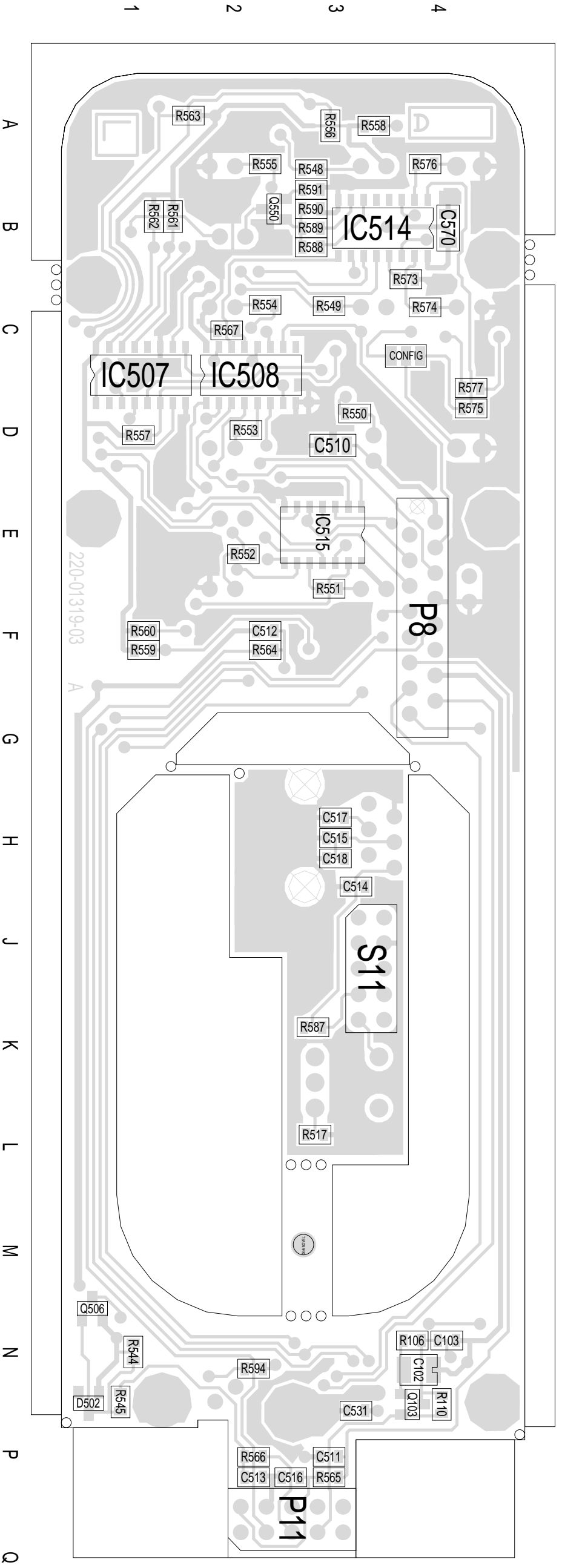
IPN: 220-01319-03
 ISSUE: A
 ID: 2.SC. 1

PROJECT: T2000
 DESIGNER: BRD
 FILE NAME: 131903a
 FILE DATE: 17-Dec-02
 NO. SHEETS: 1



TAIT ELECTRONICS	IPN:	ISS:	ID:	DATE:
	220-01319-03	A	2.BA	17 Dec 2002
T2000 LED DI PCB LAYOUT - BOTTOM SIDE				

Scale: 2.2:1 ; Rotation: 0 degrees



220-01319-03

TAIT ELECTRONICS	PN:	220-01319-03	ISS:	A	ID:	1.1TA	DATE:	17 Dec 2002
T2000 LED DI PCB LAYOUT - TOP SIDE								

Scale: 2:1 : Rotation: 0 degrees